

Alster News

In This Month's Issue

- Acterna - Lease, Rent or Buy
- Relm - Cloning Questions
- Maui - Watson, Bergvik, Concept
- Bird Demo Sale

Acterna - Lease, Rent or Buy

Acterna is constantly providing innovative ways to use their equipment.

Leasing

Two months ago, Acterna announced a 0% leasing program on new equipment.

Renting

Now they have a *NEW* Equipment Rental Program as another solution to acquire the equipment you need, in an affordable way. The Equipment Rental Program, provides rental equipment from Acterna for your short term or high-end, expensive equipment needs.

You will receive the same quality products and the same Technical Assistance Center (TAC) support that you have come to expect from Acterna. Now, you can work with the same Acterna sales representative to satisfy your new, used, and rental equipment requirements, getting you the equipment you need - when you need it - and within your budget. Here are the rental terms:

- 10% of the list price for one month
- 8% of the list price for three months
- 7% of list price for six months



HST-3000

Buying

You can also do it the old fashioned way and just buy what you need.

With its many purchasing and rental options, Acterna is your single source provider for all of your current and future equipment needs. Whether you are testing copper, fiber, T-1, DS3, Sonet or just about anything, you can lease, rent or buy product from Acterna.

Demonstration

Finally, your friendly Acterna sales representative (me) can set up a demonstration on any of our products. Ω

Relm - Cloning Questions Answered	2
Aeroflex - P-25 Implicit and Explicit Mode Operation Explained	2
P-25 Trunking - Is your system analog or digital?	2
Bergvik, Concept Seating, Watson Install in Maui	3
ZK CellTest - In-Vehicle Cellular/PCS diagnostics	3
Relm - Improvements in the DPH Software and Lithium-Ion battery	3
Bird Technologies - Demo Sale on SA-4000 units	4

Times Microwave - New EZ-600 Connector

Times Microwave Systems announces a new EZ Crimp connector for LMR-600 cable - the EZ-600-NMH-D. The EZ-600-NMH-D has a list price of \$16.00. It replaces the EZ-600-NMH-B connector and has the added features and benefits of a combination hex/knurl coupling nut, which allows tightening by hand or with a wrench; Tri-metal plating instead of silver, which eliminates tarnishing, while providing superior electrical perform-

ance; ridged landing area on the aft end for better grip and sealing of the heat shrink boot, which provides improved strain relief and weather sealing. The connector also has improved impedance matching to provide improved VSWR. **LMR®** cables are low loss, flexible, non-kinking cables that utilize easy-to-install connectors and are suitable for use as antenna feeders, system jumpers and interconnects. Ω

Relm Wireless - Cloning Questions?

Since the introduction of the LPH in 1985, one of the major features of the King, Bendix/King, BK and BK Radio product is cloning.

Cloning has become an issue because as we evolved from the LPH to the EPH to the GPH and the DPH, the microprocessor for each product was improved.

LPH to EPH

Using the LAA-0700 Standard Cloning Cable, users can clone from the LPH to the EPH and visa versa.

GPH - DPH

Using the LAA-0700 Standard Cloning Cable, users can clone from the GPH to the DPH and visa versa.

The problem comes when you are trying to clone from either the LPH/EPH to the GPH/DPH or visa versa.

E/GCC Smart Cable

To do this, you need the E/GCC Smart Cable, which allows cloning from any BK radio to BK radio.

The first consideration is that the L/EPH product have 14-channel groups and the G/DPH product have 16-channel groups. Please be aware that only 14-channels will move to or from the L/EPH when cloning to or by the G/DPH.

We have enclosed a BK Radio Cloning Guide that will help you figure things out. If you have questions, please give me and call and we'll work them out. Ω



Cloning Questions Answered


P-25 Implicit and Explicit Modes

What is the difference between implicit and explicit mode of operation for P25 systems? Implicit operation means the radio's own internal programming in conjunction with the P25 network messages determines what channel/frequency pair the radio uses. The explicit mode of operation assigns the actual channel/frequency over the air by providing the exact TX and RX frequency assignments directly to the radio.

Typically, the implicit mode of operation uses something called single block messaging, where explicit

uses multiblock messaging to convey trunking messages.

The control channel is an optional implementation for P25 systems. It allows for the control of system resources, and also offers added features not available in conventional radio communications. P25 trunked systems use a dedicated control channel to provide additional management of the system resources. Please review the white paper at:

 <http://www.aeroflex.com/products/commtest/pmr/appnotes/p25cc.pdf>. Ω

P-25 Training and Support are available from Aeroflex.com

P-25 Trunking - Digital or Analog?

So, you've got a new P-25 Digital Radio System and someone tells you it's trunked. Here are four questions that will determine whether it is "general" trunking or SmartNet/SmartZone.

1. Can the system assign an Analog voice channel? If it can, it is not P-25 Trunking.

2. What is the Baud Rate? The SmartNet/SmartZone Baud rate is 3600 where the P-25 trunking uses a 9600 Baud rate.

3. Do you know what the WACN ID is? The P-25 trunking system has a field called the WACN ID. The SmartNet/SmartZone system uses a System ID field.

4. Is the Control Channel Analog or Digital? P-25 trunking is all digital. If you use an Analog Control Channel, you have a SmartNet/SmartZone system.

I didn't know this without the help of the Aeroflex technical sales team. Please call me or them with your P-25 questions. Ω



Aeroflex 2975

Bergvik and Watson Dispatch - Maui Style

Alster is pleased to announce a three factory sale to Maui County Police.

Michael Wright - Watson Dispatch, who sold the original dispatch furniture to Maui about ten years ago, has successfully sold an upgrade for furniture and raised flooring.

Bergvik Flooring

We are replacing the existing flooring with new Bergvik flooring (see insert). The new flooring will provide a better foundation on which the furniture will sit.

Watson Dispatch

We are replacing the ten-year old dispatch consoles with the new Synergy, Uni-Frame dispatch consoles. The new consoles

feature more convenient storage and a stronger Uni-Frame design for longer life. The center section raises and lower under power as does the input platform (keyboards and mice).

Concept Seating

In addition, Concept Seating is providing new dispatch chairs for the center. The combination of Bergvik, Watson and Concept provide a much improved dispatcher environment. Besides Maui County Police, we would also like to thank Pacific Wireless and Harmer Communications for installation assistance. For ways to upgrade your dispatch center, please give me a call. Ω



Bergvik, Concept and Watson Dispatch

ZK CellTest - Small In-Vehicle Diagnostics

The ZK CellTest SAM is a household name with in-vehicle cellular system diagnostics. The improved SAM now has a backlighted color display with high resolution (320 X 240), 16 colors and won't wash out in sun light.

It also has lighted buttons and CAT-5 type interface cable with split screens to view GSM, TDMA, CDMA and 4 soft keys.

The unit support up to three phones simultaneously and monitors EAMPS, TDMA, GSM w/AMR, CDMA, 1xRTT, 1xEV DO and GPRS/EDGE.



It has an internal GPS Receiver and uses standard Compact Flash card for information storage. Post processing of the information is available with Open Platform, comma delimited ASCII, direct import to ACTIX, CellMap for MapInfo and Excel spreadsheet.

Seeing and using is believing. If you would like a demonstration of the ZK-SAM, just give me a call. I'll ask a few questions and set up a demo kit to send out to you. It really is the only way to verify that this will work for you. Ω

ZK-SAM - the diagnostic friend of the cell technician. Works from the time you start your van.

Relm Updates DPH Software - New Lithium Battery

Relm continues to improve their products and software. Gary Kessler just announced an improvement for the DPH software.

NAC Codes

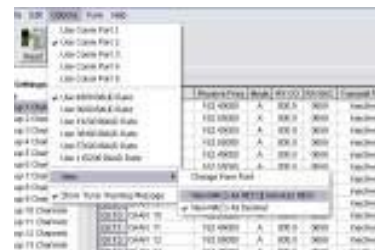
The NAC codes are now viewable in both Hex and Decimal formats. This is important where system operators designate one and not the other. You would have to have a calculator to make the conversion, now you don't. Just order the LAA-0744 program-

ming software.

Lithium-Ion Batteries

Want to make your L/E/G/DPH lighter and last longer? Just buy the LAA-0171 Lithium-Ion battery from Relm. It has 1900 mAh. It is smaller and lasts longer and it will charge in the standard charger.

For more operating time, just buy the LAA-0170 with 2200 mAh. It the same size as the standard battery and will charge in the standard charger. Ω



New DPH Software - NAC

Bird-Technologies Demo Equipment Sale

Alster Communications likes to keep their demo pool current with new models. Bird Technologies has approved the sale of several pieces of Bird demo gear now being used by us.

Right now we have four SA-4000 Site Analyzers being offered for sale at \$4,500 on a first come, first served basis.

SA-4000 Demo Unit

The list price of a new SA-4000 is \$6,985. If you are one of four lucky customers, you will save about \$2,400. Bird will invoice you and you will get a new warranty.

The sale price is actually the list price of the SA-1700. If you are interested in buying a demo unit please contact me soon.

Other Bird Equipment

We are currently taking inventory of other Bird demo units that we have used for the past year or so. We will be publish-

ing this list and the sales prices for each in the Alster News. Stayed Tuned.

SA-6000

So, you are asking why we are selling the SA-4000 demo units? The new SA-6000 will be available over the summer. The Alster guys will be getting new SA-6000 demo units.

The new unit still tests for Return Loss/VSWR, Distance to Fault and Live Power. Only now it goes from 25 MHz to 6 GHz. Call us for a demonstration.

ACES 2005

ACES 2005 will be Tuesday, October 4 in Salem; Wednesday, October 5 in Issaquah; and Thursday, October 6 in Anchorage. We will have the traditional training seminars, open exhibit area, free lunch and door prizes for you to win. Ω



Steve Stouffer
6703 154th Place SE
Bellevue, WA 98006

Phone: 800-365-1272
Fax: 425-747-4021
Email: steve@alster.com

FIND US FAST
WWW.ALSTER.COM